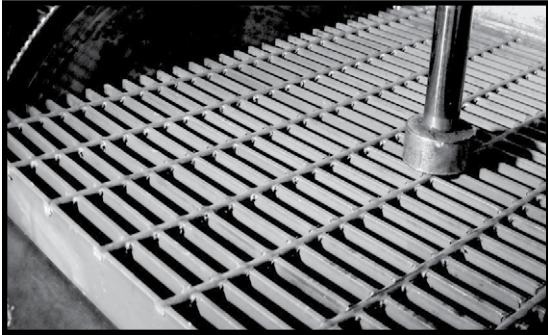


HEAVY-DUTY WELDED STEEL GRATING



Heavy-duty welded grating is strong enough for extreme load areas, such as parking lots, highways, terminals, airports and heavy-duty industrial zones.

Panel Widths:

Standard panel widths are 24" (36" available on certain sizes). Lengths up to 20' & 24' certain size. Call for availability.

Material types:

Carbon Steel & Stainless Steel

Finishes

Carbon Steel: Mill, Primed Black Paint & Galvanized

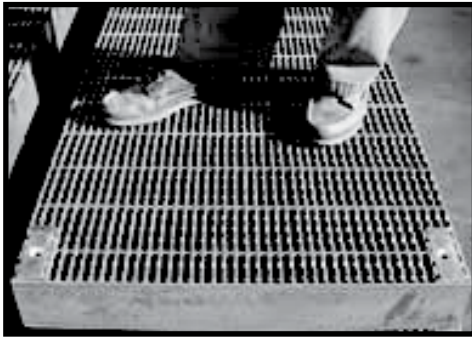
Stainless Steel: Mill finish as fabricated; Sandblasted upon request

Surface Options:

Smooth or Serrated

We Also Offer:

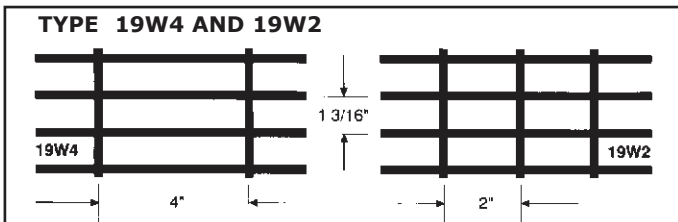
Non-standard depths above 4"; ADA-approved heavy-duty grating for wheelchairs (& heels); Riveted grates; Grizzly grates



LOAD TABLE

TYPE 19W4 - BEARING BARS 1 3/16" CENTER TO CENTER

Bar Sizes	Weight		Sec Mod	Load	SPAN																
	Lbs. Per 19W4	Sq. Ft 19W2			2'-0"	2'-6"	3'-0"	3'-6"	4'-0"	4'-6"	5'-0"	5'-6"	6'-0"	6'-6"	7'-0"	7'-6"	8'-0"	8'-6"	9'-0"	9'-6"	10'-0"
1 1/2 X 1/4	14.3	15.5	0.984	U	3282	2101	1459	1072	820	648	526	434	364	311	268	233					
				C	3282	2625	2188	1875	1641	1459	1313	1193	1094	1010	938	875					
1 1/2 X 3/8	21.7	23.7	1.477	U	4922	3150	2188	1607	1230	972	788	651	547	402		308					
				C	4922	3938	3281	2813	2461	2188	1969	1790	1641		1406		1230				
2 X 1/4	18.7	19.8	1.750	U	5834	3734	2593	1905	1459	1152	933	771	648	552	477	414	364	323			
				C	5834	4667	3890	3334	2917	2593	2334	2122	1944	1795	1667	1555	1459	1373			
2 X 3/8	28.3	30.3	2.625	U	8750	5600	3889	2857	2188	1726	1400	1157	972		714	547					
				C	8750	7000	5833	5000	4357	3889	3500	3182	2917		2500		2188				
2 1/2 X 1/4	23.1	24.3	2.734	U	9116	5834	4052	2976	2279	1801	1459	1205	1013	863	744	648	570	504	450	404	
				C	9116	7293	6077	5209	4668	4052	3646	3315	3039	2805	2604	2431	2279	2145	2025	1919	
2 1/2 X 3/8	35.0	37.0	4.102	U	13672	8750	6076	4464	3418	2701	2188	1808	1519		1116	854					
				C	13672	10938	9115	7813	6836	6076	5469	4972	4557		3906		3418				
3 X 1/4	27.5	28.6	3.937	U	13128	8401	5834	4286	3282	2593	2101	1735	1459	1243	1072	933	820	727	648	582	526
				C	13128	10502	8751	7501	6564	5834	5251	4774	4376	4040	3751	3501	3282	3089	2917	2764	2625
3 X 3/8	42.1	44.1	5.906	U	19688	12600	8750	6429	4922	3889	3150	2603	2188		1607	1230					
				C	19688	15750	13125	11250	9844	8750	7875	7159	6563		5625		4922				
3 1/2 x 1/4	31.9	33	5.359	U	17865	11433	7940	5833	4466	3528	2858	2362	1985	1691	1458	1270	1116	989	882	792	715
				C	17865	14292	11910	10208	8932	7940	7146	6496	5955	5497	5105	4765	4467	4203	3970	3762	3573
3 1/2 X 3/8	48.1	50.1	8.04	U	26797	17150	11910	8750	6699	5293	4288	3543	2977		2188	1675					
				C	26797	21438	17865	15313	13398	11910	10719	9744	8932		7656		6699				
4 x 1/4	36.3	37.4	7.000	U	23338	14936	10372	7620	5834	4610	3734	3086	2593	2210	1905	1660	1459	1292	1152	1034	933
				C	23338	18670	16558	13335	11669	10372	9335	8486	7779	7180	6668	6223	5834	5491	5186	4913	4667
4 X 3/8	54.7	56.7	10.500	U	35000	22400	15556	11429	8750	6914	5600	4628	3889		2857	2188					
				C	35000	28000	23333	20000	17500	15556	14000	12727	11667		10000		8750				



Additional Engineering Data & Information Available Upon Request.

HEAVY-DUTY WELDED STEEL GRATING

LOAD TABLES

TYPE 22W4- BEARING BARS 1 3/8" CENTER TO CENTER

Bar Sizes	Weight		Sec Mod	Load	SPAN																
	Lbs. Per	Sq. Ft			2'-0"	2'-6"	3'-0"	3'-6"	4'-0"	4'-6"	5'-0"	5'-6"	6'-0"	6'-6"	7'-0"	7'-6"	8'-0"	8'-6"	9'-0"	9'-6"	10'-0"
	22W4	22W2																			
1 1/2 x 1/4	12.6	13.7	0.843	U	2813	1800	1250	918	703	556	450	372	313	266	230	200					
				C	2813	2250	1875	1607	1406	1250	1125	1023	938	865	804	750					
1 1/2 X 3/8	19.2	21.2	1.266	U	4219	2700	1875	1378	1055	833	675	558	469		344		264				
				C	4219	3375	2813	2411	2109	1875	1688	1534	1406		1205		1055				
2 x 1/4	16.4	17.5	1.500	U	5000	3200	2222	1632	1250	988	800	661	556	473	408	356	313	277			
				C	5000	4000	3333	2857	2500	2222	2000	1818	1667	1583	1429	1333	1250	1176			
2 X 3/8	24.9	26.9	2.250	U	7500	4800	3333	2449	1875	1481	1200	992	833		612		469				
				C	7500	6000	5000	4286	3750	3333	3000	2727	2500		2143		1875				
2 1/2 X 1/4	20.3	21.4	2.344	U	7813	5000	3472	2551	1953	1543	1250	1033	868	740	638	556	488	433	385	346	
				C	7813	6250	5208	4464	3906	3472	3125	2841	2604	2404	2232	2083	1953	1838	1736	1645	
2 1/2 X 3/8	30.7	32.7	3.516	U	11719	7500	5208	3827	2930	2315	1875	1550	1302		957		732				
				C	11719	9375	7813	6696	5859	5208	4688	4261	3906		3348		2930				
3 X 1/4	24.1	25.2	3.375	U	11250	7200	5000	3673	2813	2222	1800	1487	1250	1065	918	800	703	623	556	499	450
				C	11250	9000	7500	6429	5625	5000	4500	4091	3750	3462	3214	3000	2813	2647	2500	2368	2250
3 X 3/8	36.9	38.9	5.063	U	16875	10800	7500	5510	4219	3333	2700	2231	1875		1378		1055				
				C	16875	13500	11250	9643	8438	7500	6750	6136	5625		4821		4219				
3 1/2 X 1/4	27.9	29	4.594	U	15313	9800	6806	5000	3828	3025	2450	2025	1701	1450	1250	1089	957	848	756	679	613
				C	15313	12250	10208	8750	7656	6806	6125	5568	5104	4712	4375	4083	3828	3603	3403	3224	3063
3 1/2 X 3/8	42.1	44.1	6.891	U	22969	14700	10208	7500	5742	4537	3675	3037	2552		1875		1435				
				C	22969	18375	15313	13125	11484	10208	9188	8352	7656		6563		5742				
4 X 1/4	31.7	32.8	6.000	U	20000	12800	8888	6531	5000	3950	3200	2645	2222	1893	1633	1422	1250	1107	988	856	800
				C	20000	16000	13333	11429	10000	8889	8000	7273	6667	6154	5714	5333	5000	4706	4444	4211	4000
4 X 3/8	47.9	49.9	9.000	U	30000	19200	13333	9796	7500	5926	4800	3967	3333		2449		1875				
				C	30000	24000	20000	17143	15000	13333	12000	10909	10000		8571		7500				

TYPE 38W4 - BEARING BARS 2 3/8" CENTER TO CENTER

Bar Sizes	Weight		Sec Mod	Load	SPAN																
	Lbs. Per	Sq. Ft			2'-0"	2'-6"	3'-0"	3'-6"	4'-0"	4'-6"	5'-0"	5'-6"	6'-0"	6'-6"	7'-0"	7'-6"	8'-0"	8'-6"	9'-0"	9'-6"	10'-0"
	38W4	38W2																			
1 1/2 X 1/4	8	9.1	0.516	U	1719	1100	764	561	430	340	275	227	191	163	140	122					
				C	1719	1375	1146	982	859	764	688	625	573	529	491	458					
1 1/2 x 3/8	12.2	14.2	0.773	U	2578	1650	1146	842	645	509	413	341	286		210		161				
				C	2578	2063	1719	1473	1289	1146	1031	938	859		737		645				
2 X 1/4	10.2	11.3	0.917	U	3056	1956	1358	998	764	604	489	404	340	289	249	217	191	169			
				C	3056	2444	2037	1746	1528	1358	1222	1111	1019	940	873	815	764	719			
2 x 3/8	15.6	17.6	1.375	U	4583	2933	2037	1497	1146	905	733	606	509		374		286				
				C	4583	3667	3056	2619	2292	2037	1833	1667	1528		1310		1146				
2 1/2 X 1/4	12.5	13.6	1.432	U	4774	3056	2122	1559	1194	943	764	631	530	452	390	340	298	264	236	212	
				C	4774	3819	3183	2728	2387	2122	1910	1736	1591	1469	1364	1273	1194	1123	1061	1005	
2 1/2 x 3/8	19.0	21.0	2.148	U	7161	4583	3183	2338	1790	1415	1146	947	796		585		448				
				C	7161	5729	4774	4092	3581	3183	2865	2604	2387		2046		1790				
3 X 1/4	14.7	15.8	2.063	U	6875	4400	3058	2245	1719	1358	1100	909	764	651	561	489	430	381	340	305	275
				C	6875	5500	4583	3929	3438	3056	2750	2500	2292	2115	1964	1833	1719	1618	1528	1447	1375
3 3/8	22.7	24.7	3.094	U	10313	6600	4583	3367	2578	2037	1650	1384	1146		842		645				
				C	10313	8250	6875	5893	5156	4583	4125	3750	3438		2946		2578				
3 1/2 X 1/4	17	18.1	2.807	U	9358	5989	4159	3056	2339	1848	1497	1237	1040	886	764	665	585	518	462	415	374
				C	9358	7486	6238	5347	4679	4159	3743	3403	3119	2879	2674	2495	2339	2202	2079	1970	1872
3 1/2 x 3/8	25.8	27.8	4.211	U	14036	8983	6238	4583	3509	2773	2246	1856	1560		1146		877				
				C	14036	11229	9358	8021	7018	6238	5615	5104	4679		4010		3509				
4 X 1/4	19.3	20.4	3.667	U	12222	7822	5432	3991	3056	2414	1956	1616	1358	1157	998	869	764	677	604	542	489
				C	12222	9778	8148	6984	6111	5432	4889	4444	4074	3761	3492	3259	3056	2876	2716	2573	2444
4 x 3/8	29.2	31.2	5.500	U	18333	11733	8148	5986	4583	3621	2993	2424	2037		1497		1146				
				C	18333	14667	12222	10476	9167	8148	7333	6667	6111		5238		4583				

